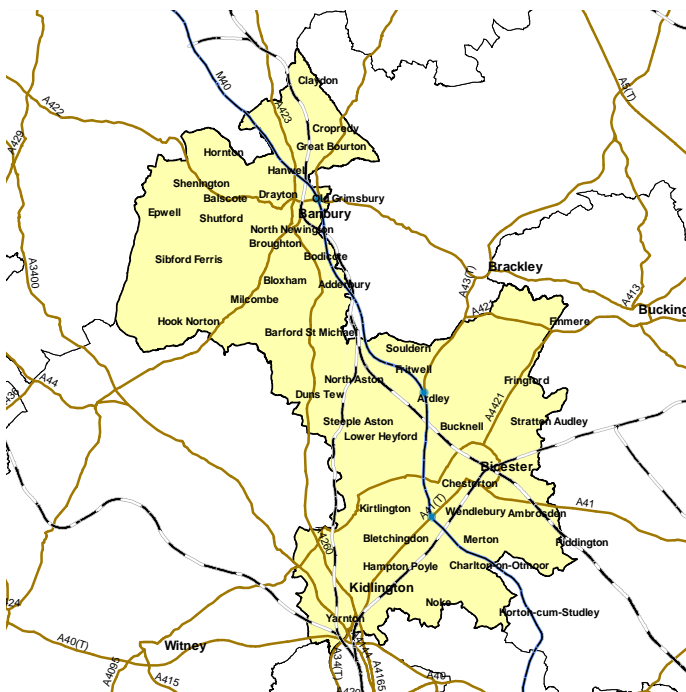


Cherwell

This profile gives a snapshot of health in your area. With other local information, this Health Profile has been designed to support action by local government and primary care trusts to tackle health inequalities and improve people's health.

Health Profiles are funded by the Department of Health and produced annually by the Association of Public Health Observatories.

To view Health Profiles for other local authorities and to find out how they were produced, visit www.healthprofiles.info



POPULATION 137,000

Based on Ordnance Survey material. © Crown Copyright. All rights reserved.
DH 100020290 2008. Other map data © Collins Bartholomew.



Cherwell at a glance

- The health of people in Cherwell is generally better than the England average. Children and young people's health is better than the England average, but GCSE achievement is worse than the average for England. Adult lifestyles are similar to those for England.
- There are health inequalities within Cherwell by location, gender, and ethnicity. Men from the least deprived areas can expect to live 4 years longer than those in the most deprived areas.
- Over the last ten years, deaths from all causes, and early deaths from heart disease and stroke have improved for men and women and are better than the England average. Early deaths from cancer have fallen over the period and are similar to the England average.
- Although the death rate from smoking is better than the England average, smoking accounts for over 170 deaths a year.
- The Oxfordshire Local Area Agreement for the next three years has prioritised: childhood obesity, effective treatment for drug users, teenage pregnancy, carers and all causes of mortality.
- For further detailed information refer to the Director of Public Health of Oxfordshire's annual report at www.oxfordshirepct.nhs.uk

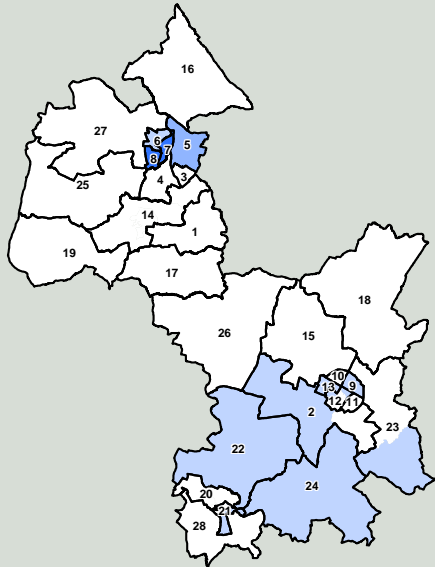


Deprivation: a national perspective

This map shows differences in deprivation between small areas in this local authority, compared to the whole of England (based on IMD 2007).

National deprivation groups

- 1 Least deprived fifth of areas in England
- 2
- 3
- 4
- 5 Most deprived fifth of areas in England



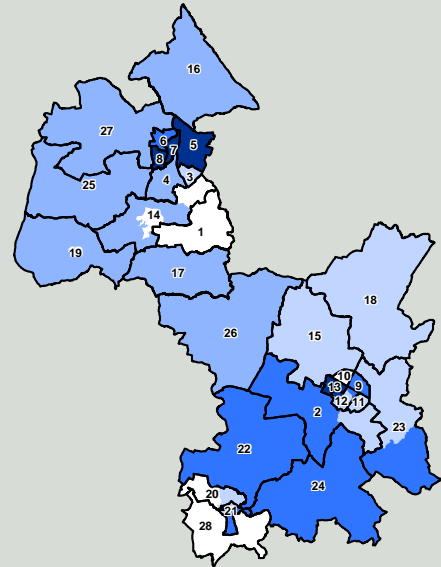
Based on Ordnance Survey material. © Crown Copyright. All rights reserved. DH 1000.20.290 2008

Deprivation: a local perspective

This map shows differences in deprivation between small areas in this local authority, compared to the local authority as a whole (based on IMD 2007).

Local deprivation groups

- 1 Least deprived fifth in this local authority
- 2
- 3
- 4
- 5 Most deprived fifth in this local authority



Based on Ordnance Survey material. © Crown Copyright. All rights reserved. DH 1000.20.290 2008

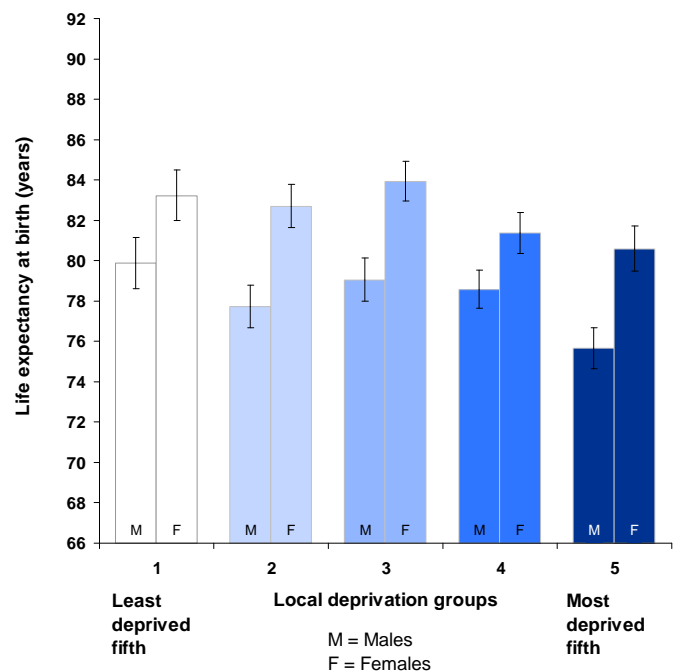
Ward legend

- | | |
|--------------------------------|-------------------------------------|
| 1 Adderbury | 28 Yarnton, Gosford and Water Eaton |
| 2 Ambrosden and Chesterton | |
| 3 Banbury Calthorpe | |
| 4 Banbury Easington | |
| 5 Banbury Grimsbury and Castle | |
| 6 Banbury Hardwick | |
| 7 Banbury Neithrop | |
| 8 Banbury Ruscote | |
| 9 Bicester East | |
| 10 Bicester North | |
| 11 Bicester South | |
| 12 Bicester Town | |
| 13 Bicester West | |
| 14 Bloxham and Bodicote | |
| 15 Caversfield | |
| 16 Cropredy | |
| 17 Deddington | |
| 18 Fringford | |
| 19 Hook Norton | |
| 20 Kidlington North | |
| 21 Kidlington South | |
| 22 Kirtlington | |
| 23 Launton | |
| 24 Otmoor | |
| 25 Sibford | |
| 26 The Astons and Heyfords | |
| 27 Wroxton | |

Ward boundaries 2005 are superimposed upon MSA (Middle Super Output Area) boundaries. Each MSA is shaded by Index of Multiple Deprivation (IMD) 2007. For details refer to www.communities.gov.uk. Numbers correspond to ward legend. Ward boundaries may have changed.

Health inequalities: a local perspective

Inequalities in life expectancy (2002-2006) for men and women who live in areas with different levels of deprivation (within this local authority).



95% confidence interval. These indicate the level of uncertainty about each value on the graph. Longer/wider intervals mean more uncertainty. When two intervals do not overlap it is reasonably certain that the two groups are truly different.

Health inequalities: changes over time

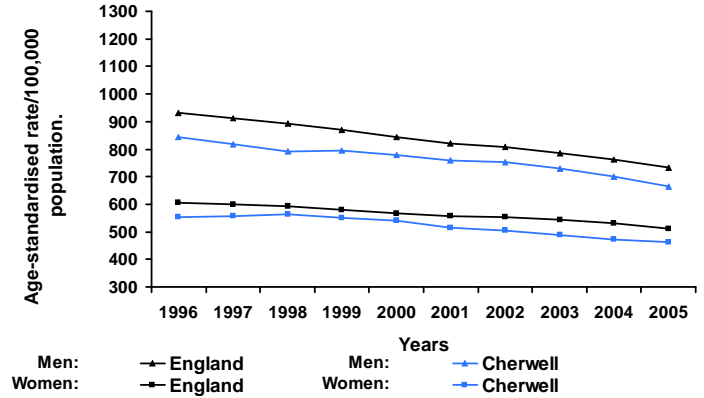
These trend graphs show how changes in health for this local authority compare with changes for the whole of England. Data points are mid-points of 3 year moving averages of annual rates i.e. 1996 represents the 3 year period 1995-97.

Trend 1 compares death rates (at all ages and from all causes) in this local authority with those for England.

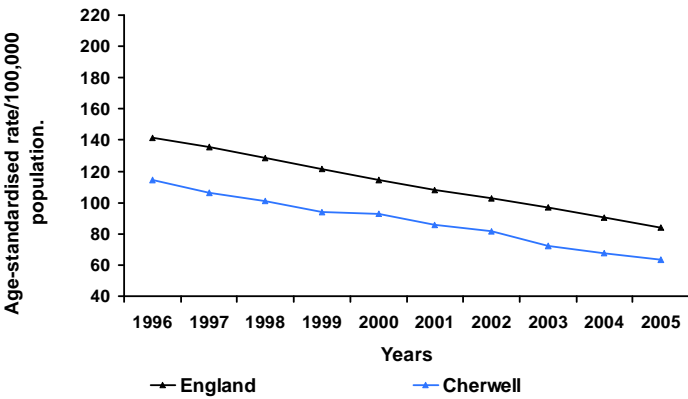
Trend 2 compares rates of early death from heart disease and stroke (in people under 75) in this local authority with those for England.

Trend 3 compares rates of early death from cancer (in people under 75) in this local authority with those for England.

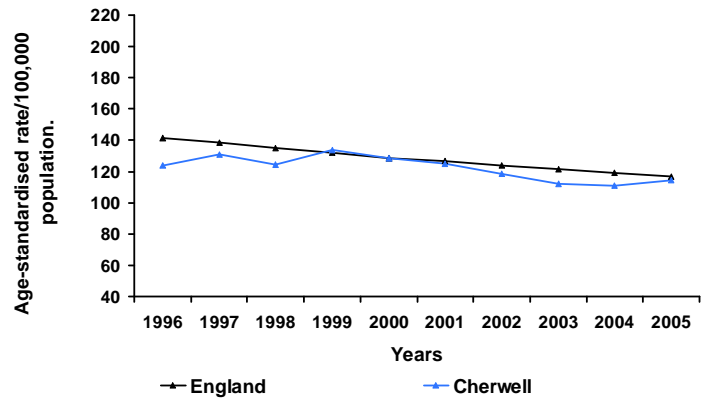
Trend 1:
All age, all cause mortality



Trend 2:
Early death rates from heart disease and stroke



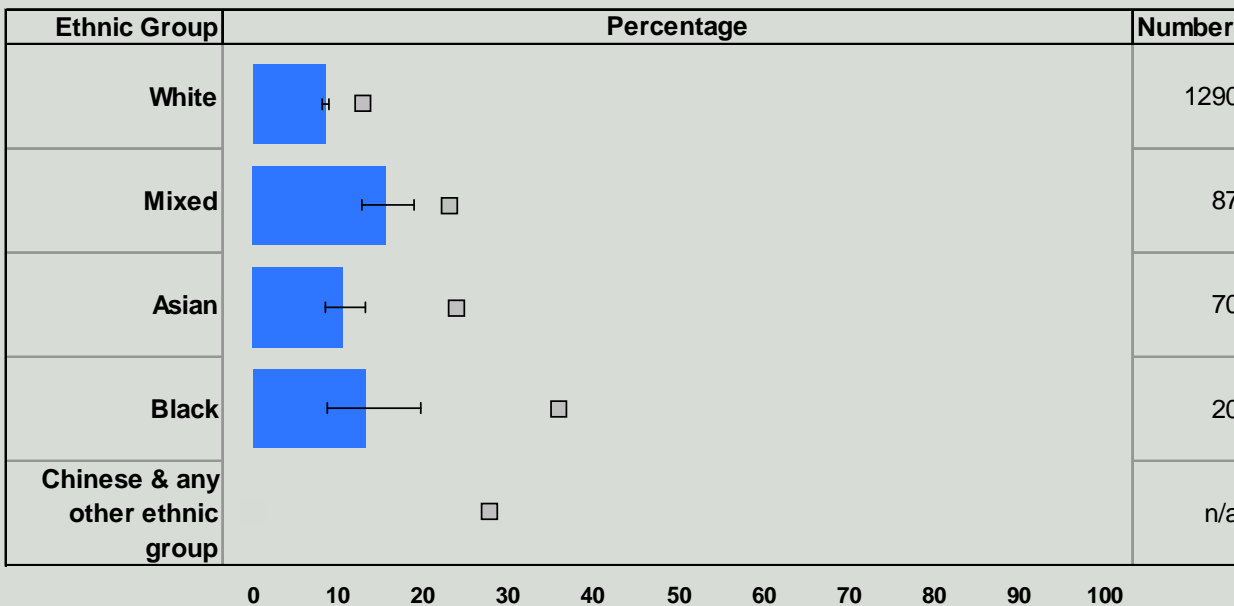
Trend 3:
Early death rates from cancer



Health inequalities: ethnicity

This chart compares the percentage of children in each ethnic group who are eligible for free school meals (2007). Eligibility for free school meals is an indicator of deprivation, and people who suffer more deprivation tend to have poorer health. Comparing deprivation by ethnic group helps identify potential health inequalities between groups.

Percentage and number of children eligible for free school meals



Where the total school population in an ethnic group in the local authority is less than 30, no data have been presented and the number column shows n/a. Where the number is less than 5, no percentage is shown.

□ England - average
■ Cherwell

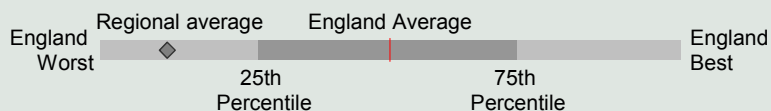
Confidence intervals are shown for local data

Health summary for Cherwell

The chart below shows how people's health in this local authority compares to the rest of England. The local result for each indicator is shown as a circle, against the range of results for England which is shown as a bar. A green circle may still indicate an important public health problem.

- Significantly worse than England average
- Not significantly different from England average
- Significantly better than England average
- No significance can be calculated

* relates to National Indicator 2007



Domain	Indicator	Local No. Per Year	Local Value	Eng Avg	Eng Worst	England Range	Eng Best
Our communities	1 Deprivation	2909	2.1	19.9	89.2	[Bar chart showing Cherwell at 2.1, significantly better than England average]	0.0
	2 Children in poverty *	3254	11.6	22.4	66.5	[Bar chart showing Cherwell at 11.6, significantly better than England average]	6.0
	3 Statutory homelessness	179	3.3	4.4	14.4	[Bar chart showing Cherwell at 3.3, significantly better than England average]	0.0
	4 GCSE achievement (5 A*-C) *	722	52.5	60.1	35.8	[Bar chart showing Cherwell at 52.5, significantly worse than England average]	82.7
	5 Violent crime	2600	19.4	19.3	38.9	[Bar chart showing Cherwell at 19.4, not significantly different from England average]	4.5
	6 Carbon emissions *	1302	9.9	7.6	20.6	[Bar chart showing Cherwell at 9.9, not significantly different from England average]	4.6
Children and young people's health	7 Smoking in pregnancy	207	11.0	16.1	38.8	[Bar chart showing Cherwell at 11.0, significantly better than England average]	4.4
	8 Breast feeding initiation *	1455	77.4	69.2	33.2	[Bar chart showing Cherwell at 77.4, significantly better than England average]	90.9
	9 Physically active children *	14265	91.3	85.7	63.3	[Bar chart showing Cherwell at 91.3, significantly better than England average]	99.2
	10 Obese children *	94	7.4	9.9	16.1	[Bar chart showing Cherwell at 7.4, significantly better than England average]	4.9
	11 Children's tooth decay (at age 5)	n/a	1.1	1.5	3.2	[Bar chart showing Cherwell at 1.1, significantly better than England average]	0.4
	12 Teenage pregnancy (under 18) *	99	37.8	41.1	83.1	[Bar chart showing Cherwell at 37.8, not significantly different from England average]	12.5
Adults' health and lifestyle	13 Adults who smoke *	n/a	22.5	24.1	40.9	[Bar chart showing Cherwell at 22.5, significantly better than England average]	13.7
	14 Binge drinking adults	n/a	16.4	18.0	28.9	[Bar chart showing Cherwell at 16.4, significantly better than England average]	9.7
	15 Healthy eating adults	n/a	27.1	26.3	14.2	[Bar chart showing Cherwell at 27.1, significantly better than England average]	45.8
	16 Physically active adults	n/a	13.1	11.6	7.5	[Bar chart showing Cherwell at 13.1, significantly better than England average]	17.2
	17 Obese adults	n/a	23.5	23.6	31.2	[Bar chart showing Cherwell at 23.5, not significantly different from England average]	11.9
Disease and poor health	18 Under-15s 'not in good health'	251	9.8	11.6	20.8	[Bar chart showing Cherwell at 9.8, significantly better than England average]	6.4
	19 Incapacity benefits for mental illness *	1330	15.3	27.5	68.6	[Bar chart showing Cherwell at 15.3, significantly better than England average]	8.4
	20 Hospital stays related to alcohol *	311	225.8	260.3	741.1	[Bar chart showing Cherwell at 225.8, significantly better than England average]	87.6
	21 Drug misuse	443	5.0	9.9	34.9	[Bar chart showing Cherwell at 5.0, significantly better than England average]	1.3
	22 People diagnosed with diabetes	4217	3.1	3.7	5.9	[Bar chart showing Cherwell at 3.1, significantly better than England average]	2.1
	23 Sexually transmitted infections					[Bar chart showing Cherwell at 0, significantly better than England average]	0.0
	24 New cases of tuberculosis	10	7.0	15.0	102.0	[Bar chart showing Cherwell at 7.0, significantly better than England average]	0.0
	25 Hip fracture in over-65s	120	469.4	479.8	699.8	[Bar chart showing Cherwell at 469.4, not significantly different from England average]	219.0
Life expectancy and causes of death	26 Life expectancy - male *	n/a	78.6	77.3	73.0	[Bar chart showing Cherwell at 78.6, significantly better than England average]	83.1
	27 Life expectancy - female *	n/a	82.7	81.6	78.3	[Bar chart showing Cherwell at 82.7, significantly better than England average]	87.2
	28 Infant deaths	11	6.0	5.0	10.3	[Bar chart showing Cherwell at 6.0, significantly better than England average]	0.0
	29 Deaths from smoking	168	185.5	225.4	355.0	[Bar chart showing Cherwell at 185.5, significantly better than England average]	139.4
	30 Early deaths: heart disease & stroke *	87	63.7	84.2	142.4	[Bar chart showing Cherwell at 63.7, significantly better than England average]	39.7
	31 Early deaths: cancer *	155	114.3	117.1	167.8	[Bar chart showing Cherwell at 114.3, significantly better than England average]	76.7
	32 Road injuries and deaths *	82	59.7	56.3	194.6	[Bar chart showing Cherwell at 59.7, significantly better than England average]	20.8

Note (numbers in bold refer to the above indicators)

1 % of people in this area living in 20% most deprived areas of England 2005 2 % of children living in families receiving means-tested benefits 2005 3 Crude rate per 1,000 households 2005-2006 4 % at Key Stage 4 2006-2007 5 Recorded violence against the person crimes (crude rate per 1,000 population) 2006-2007 6 Total end user CO2 emissions per capita (tonnes CO2 per resident) 2005 7 % of mothers smoking in pregnancy where status is known 2006-2007 8 % of mothers initiating breast feeding where status known 2006-2007 9 % 5-16 year olds who spend at least 2 hrs/wk on high quality PE and school sport 2006-2007 10 % Schoolchildren in Reception year. 2006-2007 11 Average (mean) number of teeth per child which were actively decayed, filled, or had been extracted (age 5) 2005-2006 12 Under-18 conception rate per 1,000 females (crude rate) 2004-2006 (provisional) 13 % Modelled estimate from Health Survey for England. 2003-2005 14 % Modelled estimate from Health Survey for England. 2003-2005 15 % Modelled estimate from Health Survey for England. 2003-2005 16 % aged 16+ 2005/06 17 % Modelled estimate from Health Survey for England. 2003-2005 18 % who self assessed general health as 'not good' (directly age standardised) 2001 19 Crude rate per 1,000 working age population. 2006 20 Directly age and sex standardised rate per 100,000 pop. 2006-2007 21 Crude rate per 1000 population aged 15-64. No significance calculated for lower tier authorities. 2004-2005 22 % of people on GP registers with a recorded diagnosis of diabetes. 2005-2006 23 Indicator blank as data not yet available for local authorities. 24 Per 100,000 population (3-year average crude rate) 2004-2006 25 Directly age-standardised rate for emergency admission 2006/07 26 At birth, years 2004-2006 27 At birth, years 2004-2006 28 Rate /1,000 live births 2004-06 29 Per 100,000 population age 35+, directly age standardised rate. 2004-2006 30 Directly age standardised rate/100,000 pop. under 75 2004-2006 31 Directly age standardised rate/100,000 pop. under 75 2004-2006 32 Per 100,000 population (3-year average crude rate) 2004-2006

For more information from your regional PHO, visit www.apho.org.uk

You may use this profile for non-commercial purposes provided the source is acknowledged. 'Source: APHO and Department of Health. © Crown Copyright 2008.'